

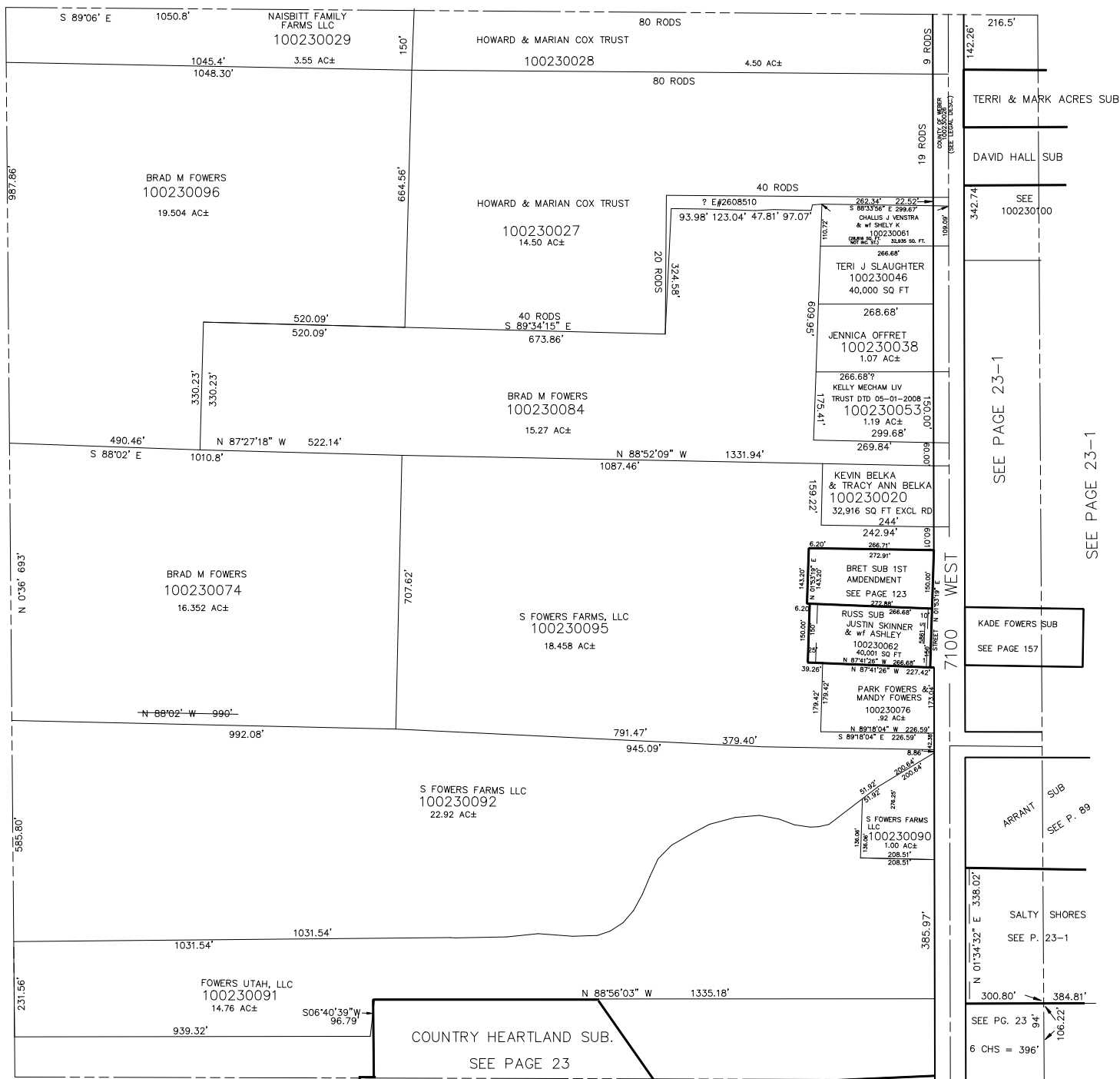
NW.1/4
SECTION 23, T.5N., R.3W., S.L.B. & M.

IN HOOPER CITY

1" = 200'

SEE PAGE 19

TAXIN UNIT: 31



SEE PAGE 22

SEE PAGE 23-1

SEE PAGE 23-1

SEE PAGE 23

ARRANT SUB
SEE P. 89

SALTY SHORES
SEE P. 23-1

SEE PG. 23
6 CHS = 396'